

# SUPER VENUS

2020

2 bedrooms

4 beds

21.70 m<sup>2</sup>

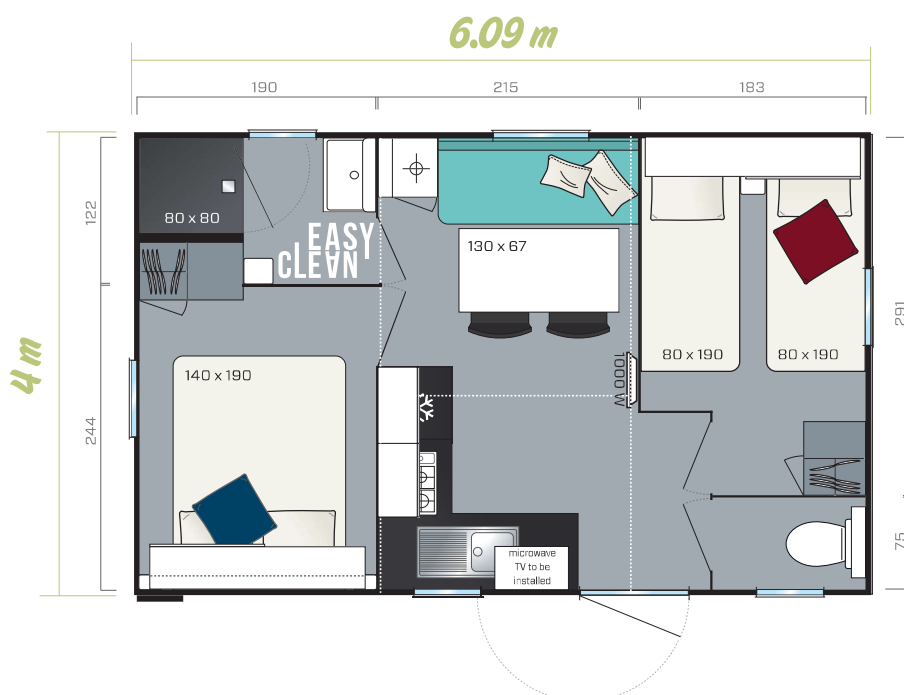
6.09 x 4 m



The Super Venus is shown with 4-side white cladding  
Overall Dimensions. Usable interior floor area. Height 3.45 m

**The Super Venus is the ideal model for small plots; it is just as practical as the standard models, but more compact.**

- ✦ Practical and user-friendly kitchen
- ✦ 2 spacious bedrooms with a dressing area, a large hotel-style wardrobe and an overhead cabinet in each
- ✦ Maximum equipment level to keep 4 people comfortable in summer and off-season



# Standard fittings

- Smoke detector - guaranteed for 10 years
- 100% LED indoor lighting
- 1000 W convector
- 35kg/m<sup>3</sup> HR Foam mattress with the OEKO-TEX label.
- High and low vents
- Phthalate-free lino
- Central circuit breaker
- Aerial socket and TV cabling
- Kitchen units on feet with PVC plinths
- Flow reducers on sink and washbasin mixer taps (7 l/min)
- Top-of-the-range, ACS-certified mixer taps
- Natural draught gas boiler with pilot light (14 kW)
- Environmental awareness sticker to encourage ecological behaviour



## Kitchen

- Microwave oven compartment
- Deep pan drawer
- White, 4-burner gas hob
- 115 L, class A+ table top fridge
- Roller blind

## Shower room & WC

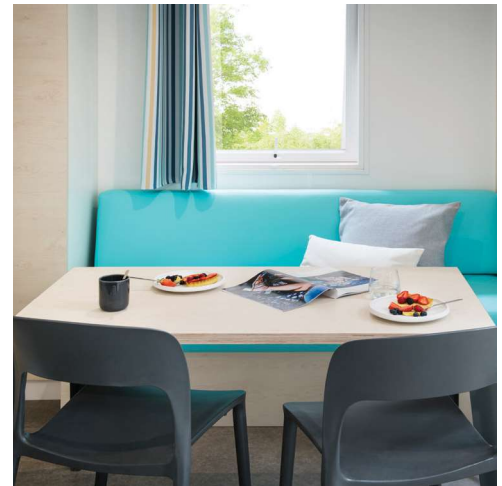
- Easy Clean shower room that is designed to be durable.
- 80x80 cm shower tray with smooth, extra flat floor
- Wall-mounted washbasin with built-in towel rail and shelves
- Modern design corner shelf
- Window with frosted glass for optimal privacy
- Dual volume toilet cistern (3/6 litres)

## Living room

- Dining table with fixed anthracite lacquered legs
- Long bench seat
- 2 grey, folding in&out chairs

## Master bedroom

- Shelves in the headboard topped with an overhead cabinet with sliding door
- Adjustable reading lights with integrated on/off switch
- 2 wall-mounted metal bedside tables
- A large hotel-style wardrobe
- 18 slat bed frame with raised legs and 35 kg/m<sup>3</sup> HR foam mattress
- Blackout curtain



## Children's/guest bedroom

- Overhead cabinet with sliding door and hotel-style wardrobe.
- Metal bedside table to be installed
- 18 slat bed frame with raised legs and 35 kg/m<sup>3</sup> HR foam mattress
- Blackout curtain

## The ideal options

- Blackout blind and mosquito screen in living room and bedrooms
- Bunk bed to offer more space or more sleeping capacity
- 500 W convector heater in the bedrooms and the shower room

