

# RIVIERA 3

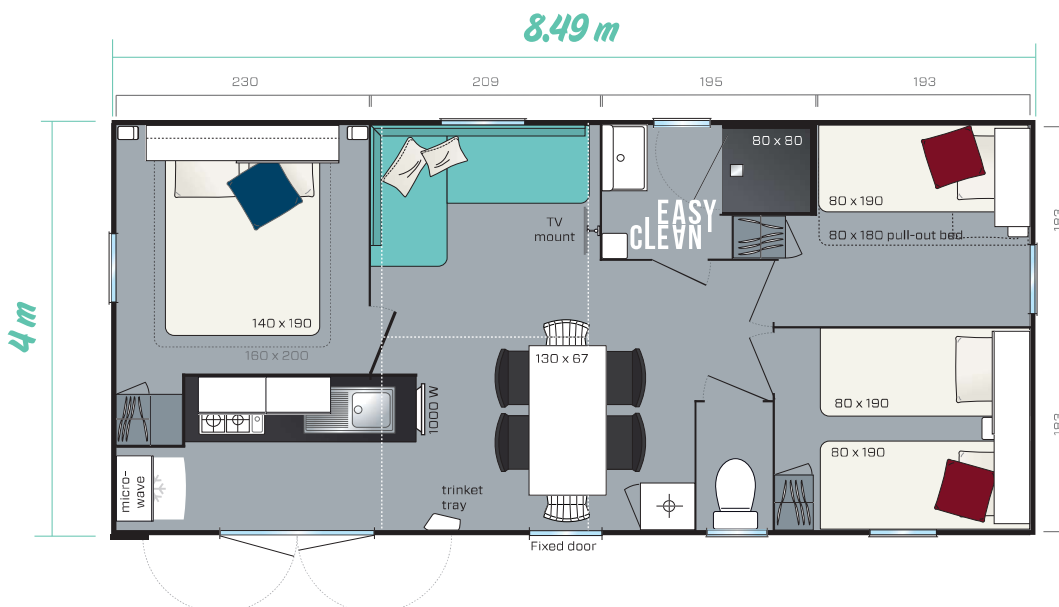
3 bedrooms  
6 beds  
30.50 m<sup>2</sup>  
8.49 x 4 m



The Riviera 3 is shown with Terracotta cladding  
Overall Dimensions. Usable interior floor area. Height 3.54 m

**This is the ideal model for a great family holiday: bright, comfortable and with a summer kitchen opening to the outside.**

- ✦ 1 double-door entrance and a fixed bay window
- ✦ Beautiful master bedroom allowing for a 160 x 200 cm bed
- ✦ 1 light living room with separate areas: kitchen and lounge



# Standard fittings

- Smoke detector - guaranteed for 10 years
- 100% LED indoor lighting
- 1000 W convector
- 35kg/m<sup>3</sup> HR Foam mattress with the OEKO-TEX label.
- High and low vents
- Phthalate-free lino
- Central circuit breaker
- Aerial socket and TV cabling
- Kitchen units on feet with PVC plinths
- Flow reducers on sink and washbasin mixer taps (7 l/min)
- Top-of-the-range, ACS-certified mixer taps
- Natural draught gas boiler with pilot light (14 kW)
- Environmental awareness sticker to encourage ecological behaviour



## Kitchen

- Practical kitchen
- Microwave oven compartment
- Deep pan drawer
- White, 4-burner gas hob
- 2-door, 207 L white class A+ fridge-freezer

## Shower room

- Easy Clean shower room that is designed to be durable
- 80x80 cm shower tray with smooth, extra flat floor
- Wall-mounted washbasin with built-in towel rail and shelves
- Modern design corner shelf
- Window with frosted glass for optimal privacy
- Dual volume toilet cistern (3/6 litres)

## Living room

- Dining table with fixed anthracite lacquered legs
- TV bracket for any type of screen
- Cubbyhole
- Large L-shaped bench seat
- 4 grey in&out folding chairs
- 2 Folding chairs

## Master bedroom

- Shelves in the headboard topped with an overhead cabinet with sliding door
- Adjustable reading lights with integrated on/off switch
- 2 wall-mounted metal bedside tables
- A large hotel-style wardrobe
- 18 slat bed frame with raised legs and 35 kg/m<sup>3</sup> HR foam mattress
- Blackout curtain



## Children's/guest bedrooms

- Overhead cabinet with sliding door in 1 bedroom; the other bedroom has an open unit
- Metal bedside table to be installed
- Wardrobe at the foot of the bed
- 18 slat bed frame with raised legs and 35 kg/m<sup>3</sup> HR foam mattress.
- Blackout curtain

## The ideal options

- Bench seat with pull-out bed for 2 additional sleeping spaces
- 160 x 200-cm bed
- 500w convector heater in the shower room and the bedrooms

Non-contractual document: descriptions, illustrations and photos are for guidance only.

