

# AQUA 3

2020

3 bedrooms  
6 beds  
38.60 m<sup>2</sup>  
10.69 x 4 m



SnapPress

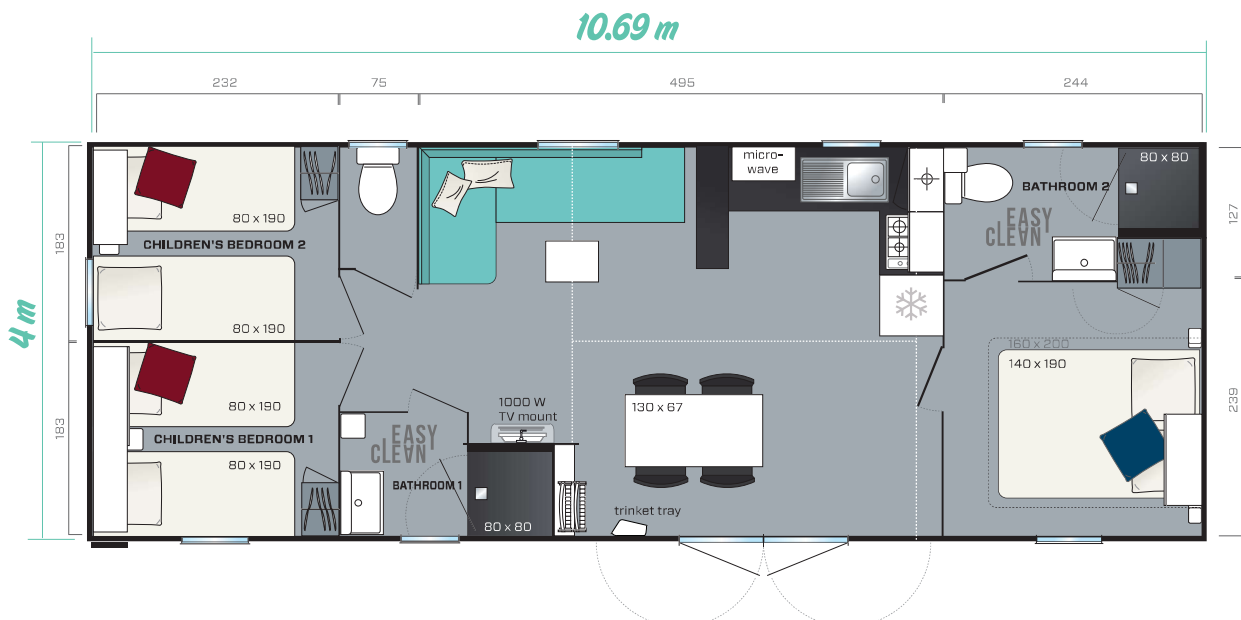
Discover the Aqua 3 in a 360° video with the SnapPress application



The Aqua 3 is shown with Nutmeg cladding  
Overall Dimensions. Usable interior floor area. Height 3.54 m

**The Aqua 3 offers the possibility of hosting 6 people comfortably in a spacious model: 2 shower rooms and 3 bedrooms.**

- ✦ Kitchen with breakfast bar
- ✦ Living room with dining table separated from the lounge
- ✦ L-shaped bench seat and coffee table
- ✦ Large master bedroom with en-suite shower room and dressing area



# Standard fittings

- Smoke detector - guaranteed for 10 years
- 100% LED indoor lighting
- 1000 W convector
- 35kg/m<sup>3</sup> HR Foam mattress with the DEKO-TEX label.
- High and low vents
- Phthalate-free lino
- Central circuit breaker
- Aerial socket and TV cabling
- Kitchen units on feet with PVC plinths
- Flow reducers on sink and washbasin mixer taps (7 l/min)
- Top-of-the-range, ACS-certified mixer taps
- Natural draught gas boiler with pilot light (14 kW)
- Environmental awareness sticker to encourage ecological behaviour



## Kitchen

- Kitchen with breakfast bar
- Microwave oven compartment
- Deep pan drawer
- White, 4-burner gas hob
- 2-door, 207 L white class A+ fridge-freezer
- Roller blind

## Shower rooms

- Easy Clean shower rooms that are designed to be durable
- 80x80 cm shower tray with smooth, extra flat floor
- Wall-mounted washbasin with built-in towel rail and shelves
- Modern design corner shelf
- Window with frosted glass for optimal privacy
- Dual volume toilet cistern (3/6 litres) in the master shower room

## The ideal options

- Bench seat with spare bed for 2 additional sleeping spaces

## Living room

- Coffee table with handles and lacquered metal legs
- Dining table with fixed anthracite lacquered legs
- TV bracket with shelf underneath
- Mirror
- Trinket tray
- Large L-shaped bench seat
- 4 grey in&out folding chairs
- 2 additional folding chairs

## Master bedroom

- Shelves in the headboard topped with an overhead cabinet with sliding door
- Adjustable reading lights with integrated on/off switch
- 2 wall-mounted metal bedside tables
- A large hotel-style wardrobe
- 18 slat bed frame with raised legs and 35 kg/m<sup>3</sup> HR foam mattress
- Blackout curtain



## Children's/guest bedrooms

- Overhead cabinet with sliding door in 1 bedroom; the other bedroom has an open unit
- Metal bedside table to be installed
- Wardrobe at the foot of the bed
- 18 slat bed frame with raised legs and 35 kg/m<sup>3</sup> HR foam mattress.
- Blackout curtain

- 160 x 200-cm bed

- Bunk bed to make space for a baby's cot

