

AQUA 2

2020

2 bedrooms
4 beds
30.50 m²
8.49 x 4 m



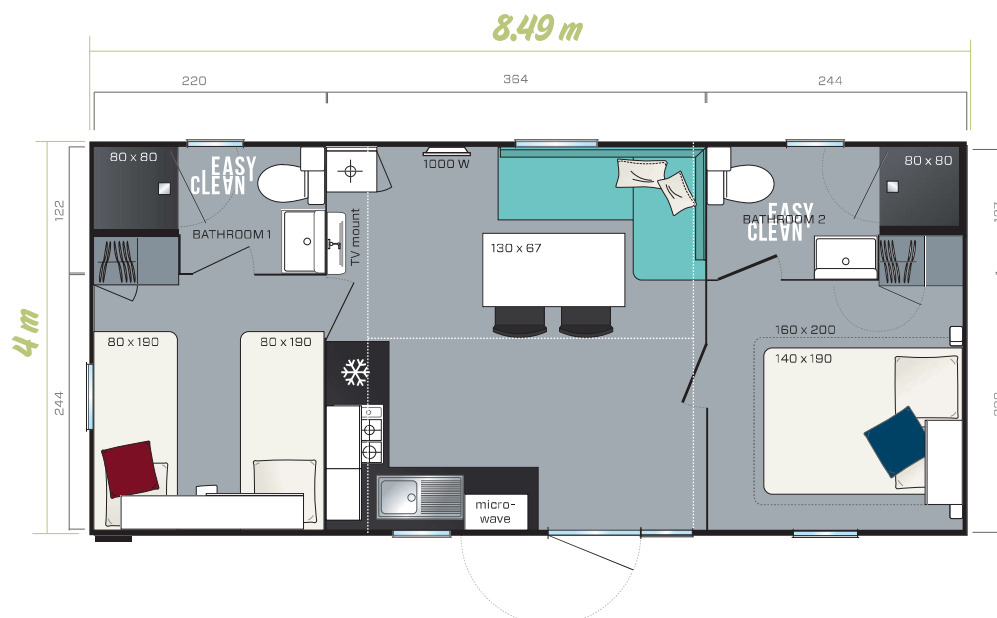
Discover the Aqua 2 in a 360° video with the SnapPress application



The Aqua 2 is shown with Terracotta cladding
Overall Dimensions. Usable interior floor area. Height 3.54 m

Plenty of space with great freedom of movement in this 2 bedroom model, which has been designed for conviviality and in which each room has its own shower room.

- ✦ User-friendly and well-equipped kitchen
- ✦ Large L-shaped seating
- ✦ Vast master bedroom with en-suite shower room
- ✦ Large children's bedroom with 2nd en-suite shower room



Standard fittings

- Smoke detector - guaranteed for 10 years
- 100% LED indoor lighting
- 1000 W convector
- 35kg/m³ HR Foam mattress with the DEKO-TEX label.
- High and low vents
- Phthalate-free lino
- Central circuit breaker
- Aerial socket and TV cabling
- Kitchen units on feet with PVC plinths
- Flow reducers on sink and washbasin mixer taps (7 l/min)
- Top-of-the-range, ACS-certified mixer taps
- Natural draught gas boiler with pilot light (14 kW)
- Environmental awareness sticker to encourage ecological behaviour



Kitchen

- Microwave oven cabinet
- Deep pan drawer
- White, 4-burner gas hob
- 115 L, class A+ table top fridge
- Roller blind

Shower rooms

- Easy Clean shower rooms that are designed to be durable
- 80x80 cm shower tray with smooth, extra flat floor
- Wall-mounted washbasin with built-in towel rail and shelves
- Modern design corner shelf
- Window with frosted glass for optimal privacy
- Dual volume toilet cistern (3/6 litres)

Living room

- Dining table with fixed anthracite lacquered legs
- TV bracket with shelf underneath
- Large L-shaped bench seat
- 2 grey in&out folding chairs

Master bedroom

- Semi-open cabinet on the headboard
- Adjustable reading lights with integrated on/off switch
- 2 wall-mounted metal bedside tables
- A large hotel-style wardrobe
- 18 slat bed frame with raised legs and 35 kg/m³ HR foam mattress
- Blackout curtain
- En-suite shower room



Children's/guest bedrooms

- Overhead cabinet with sliding door in 1 bedroom; the other bedroom has an open unit
- Metal bedside table to be installed
- Wardrobe at the foot of the bed
- 18 slat bed frame with raised legs and 35kg/m³ HR foam mattress.
- Blackout curtain
- En-suite shower room

The ideal options

- Spare bed in the bench seat
- 160 x 200 cm bed in the master bedroom
- 500w convector heater in the shower room and the bedrooms

