

2016 RANGE

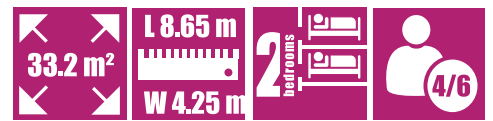
O'HARA

865 2-bed 2-bath

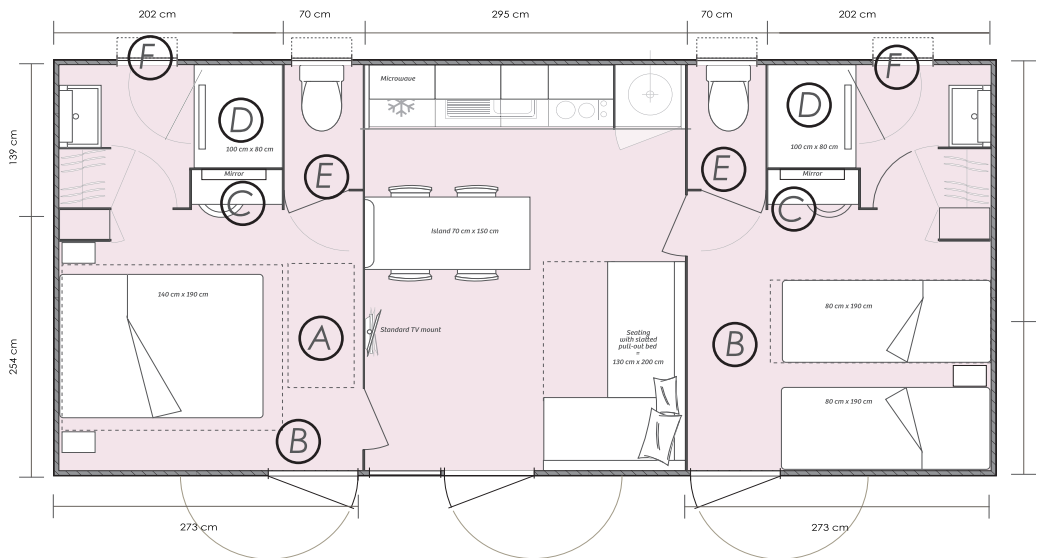


This **extremely comfortable 2-bedroom, 2-bathroom** model boasts an **integrated kitchen** that opens onto a **warm and welcoming living room, well-designed furniture and 2 XXL showers.**

Ideal for families, it can be **converted** into two completely separate suites **via the "hotel package" option.**



Overall dimensions - Usable floor area -



- (A) Room for a cot even with a 160 cm x 200 cm bed
- (B) More than 40 cm all around the bed
- (C) Multifunctional desk with seat in each bedroom
- (D) Private bathroom with XXL shower
- (E) Separate toilet
- (F) Venetian blind over bathroom window

OVERALL HEIGHT 3.54 m

STANDARD FEATURES

COMFORT

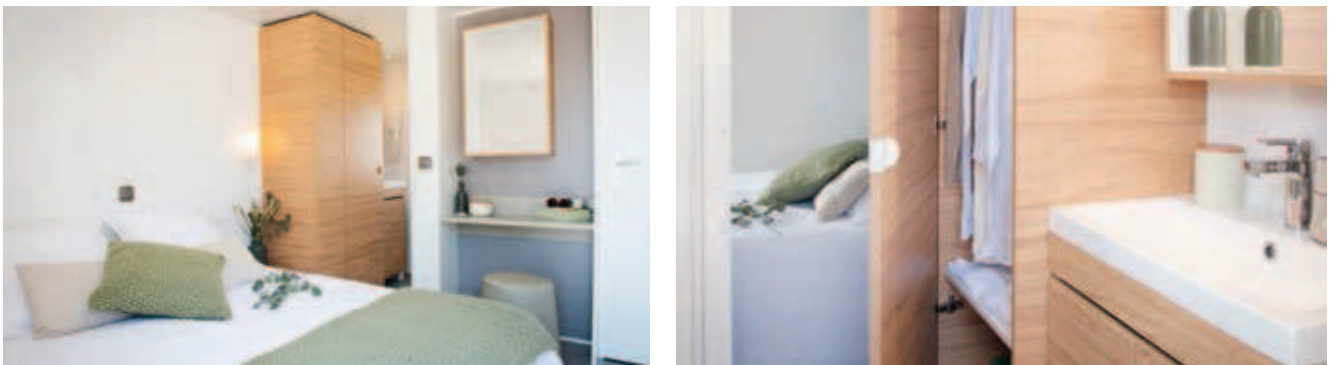
- 1 Extractor
- 2 1,000 W convector
- 3 TV cabling
- 4 4 height-adjustable stools
- 5 Hairdryer in master bathroom
- 6 Balanced-flue boiler

SAFETY/QUALITY

- 1 35 kg/m³ probiotic OEKO-TEX® mattress
- 2 Smoke detector guaranteed for 10 years
- 3 Shower with flat tray. Extra-thick safety glass door
- 4 Bathroom and kitchen units on feet with PVC plinths in the kitchen
- 5 Main passage lino
- 6 Low-formaldehyde chipboard panels

SAVINGS

- 1 Key switch
- 2 Outside lighting with timer
- 3 Class A+ fridge
- 4 100% LED indoor lighting
- 5 Top-of-the-range plumbing fixtures fitted with 7 l/min flow-limiters



THE LIVING ROOM is inviting and attractive with an integrated kitchen fitted with a central island. The living room features L-shaped seating equipped with a pull-out bed.

2 SUITES each comprising a bedroom with window, separate toilet and private bathroom with XXL shower.

THE SPACIOUS BEDROOMS have room for a cot as well as a bed measuring 160 cm x 200 cm. They are fitted with a double wardrobe and a multifunctional desk.

THIS MODEL CAN BE CONVERTED VIA THE "HOTEL PACKAGE" OPTION: there are locks on either side of the communicating living room/bedroom doors and each bedroom has a key switch, a TV mounting arm and a window that opens to the outside.



O'Hara has been assessed in accordance with ISO 26000



The O'Hara brands and factories are ISO 14001 certified

O'HARA

O'Hara Site Givrand • 4 impasse de l'Aurore • P.A. du Soleil Levant • Givrand • CS 23656 • 85806 Saint-Gilles-Croix-de-Vie CEDEX • France
Tel. +33 (0)2 51 26 20 28 • Fax +33 (0)2 51 26 20 27 • information@ohara.fr // www.ohara.fr

GRUPEBENETEAU