

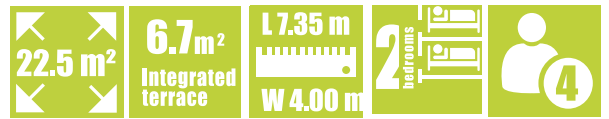
2016 RANGE

O'HARA

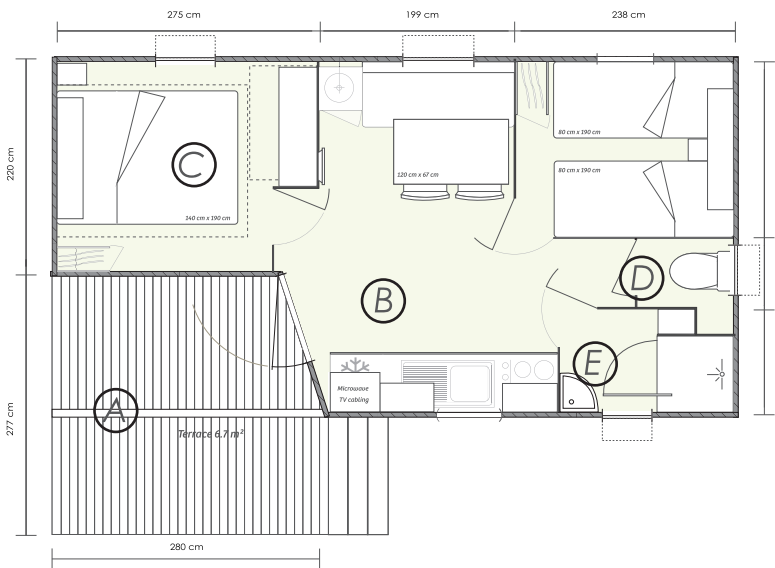
734 2-bed T



The **compact and cost-effective** mobile home with integrated terrace that doesn't compromise on comfort. Adaptable to suit any plot thanks to the reversible terrace, it can also accommodate families with babies.



Overall dimensions - Usable floor area -
Terrace: net area excluding posts and railings.



- Ⓐ Partially covered terrace.
- Ⓑ Kitchen opening onto the terrace.
- Ⓒ Bedroom with room for a bed measuring 160 cm x 200 cm and a cot.
- Ⓓ Separate toilet.
- Ⓔ Practical corner basin.

OVERALL HEIGHT 3.49 m

STANDARD FEATURES

COMFORT

- 1 Extractor
- 2 1,000 W convector
- 3 TV cabling
- 4 Indoor/outdoor chairs
- 5 Hairdryer
- 6 Hydropower boiler

SAFETY/QUALITY

- 1 35 kg/m³ probiotic OEKO-TEX® mattress
- 2 Smoke detector guaranteed for 10 years
- 3 Shower with flat tray. Extra-thick safety glass door
- 4 Bathroom and kitchen units on feet with PVC plinths in the kitchen
- 5 Main passage lino
- 6 Low-formaldehyde chipboard panels

SAVINGS

- 1 Key switch
- 2 Outside lighting with timer
- 3 Class A+ fridge
- 4 100% LED indoor lighting
- 5 Top-of-the-range plumbing fixtures fitted with 7 l/min flow-limiters
- 6 Awning



KITCHEN with plenty of storage and a TV/microwave cabinet.

MASTER BEDROOM featuring a bridging unit above the bed. Below it is a clothes rail for increased storage capacity. Dedicated cot space.



O'Hara has been assessed in accordance with ISO 26000



The O'Hara brands and factories are ISO 14001 certified

O'HARA

O'Hara Site Givrand • 4 impasse de l'Aurore • P.A. du Soleil Levant • Givrand • CS 23656 • 85806 Saint-Gilles-Croix-de-Vie CEDEX • France
Tel. +33 (0)2 51 26 20 28 • Fax +33 (0)2 51 26 20 27 • information@ohara.fr // www.ohara.fr

GRUPEBENETEAU